

New Forest District (Outside the National Park)

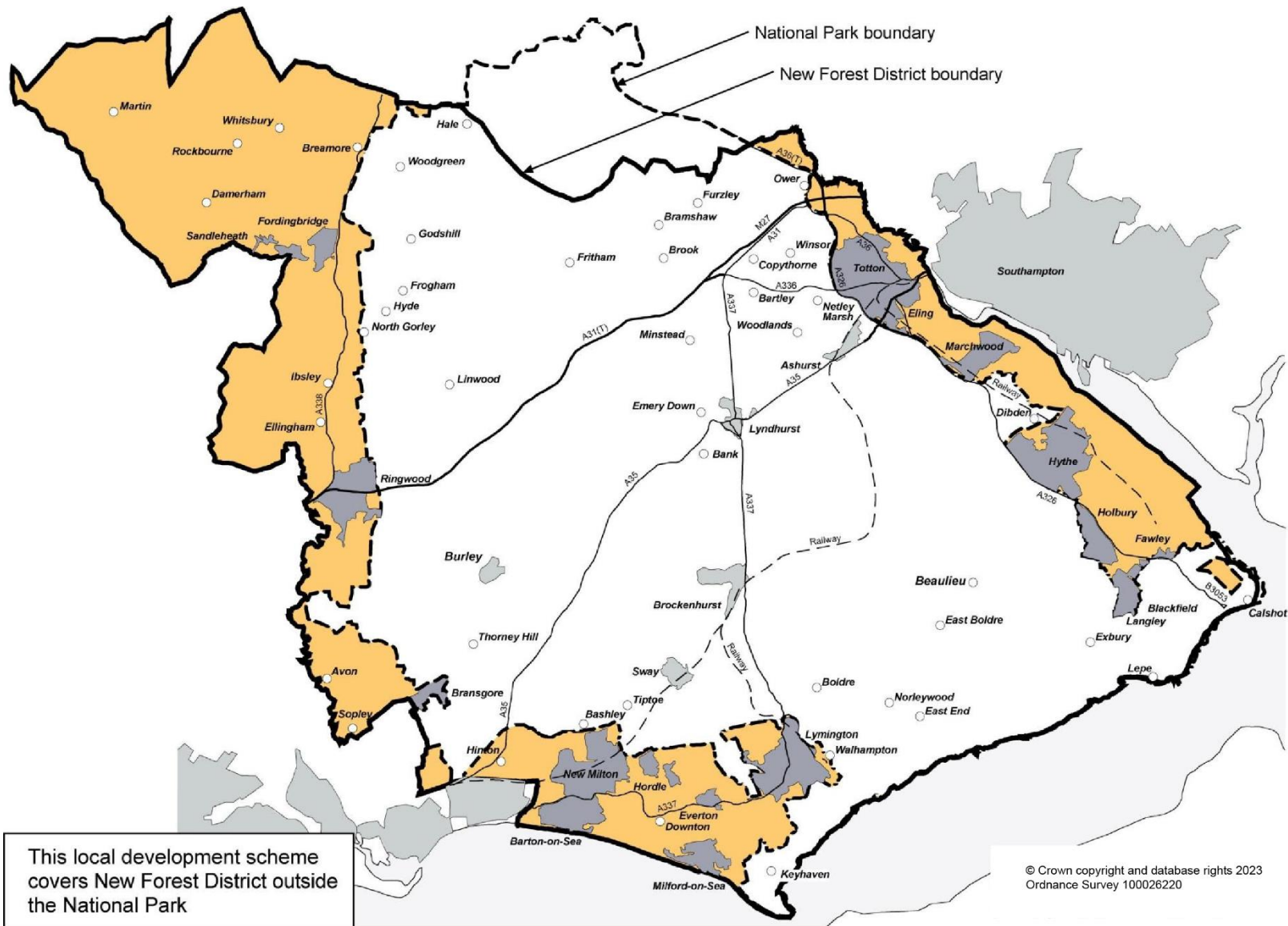
Local Development Scheme

DRAFT February 2024



Contents

Section No.		Page
	Map of New Forest District Council Local Planning Authority Area	2
1.	Introduction	3
2.	Context for the Local Development Scheme revision	3
3.	Local Plan review approach and programme	4
4.	Documents supporting the Local Plan	5
Annex 1	Initial programme for 2024/25 and 2025/26 for the preparation of the Local Plan review	6



1. Introduction

1.1. The Local Development Scheme provides information about the production of the New Forest District Local Plan for the area outside the New Forest National Park (see Map on page 2, areas in orange and settlements in dark grey) hereafter referred to as the 'plan area'. The National Park Authority is responsible for producing the Local Plan for the National Park area.

1.2. The Local Development Scheme (LDS) sets out the work programme for the Local Plan review and identifies when the public and other interested parties can get involved in the process of plan-making. It includes information about the content and production timetable for the Local Plan review, superseding the previous 2021 version which addressed preparation of the Local Plan Part 2 2016-2036. The Local Plan Part 2 is no longer being progressed, work undertaken so far will be included within the full Local Plan review.

1.3. The Local Plan is the most important part of the Development Plan for the plan area. The Development Plan is the statutory basis for deciding planning applications, provided that it is up to date. As at February 2024 the Development Plan for New Forest District (outside the National Park) comprises the following:

- the [Local Plan 2016-2036 Part 1: Planning Strategy](#) adopted July 2020
- Saved policies from the following earlier Local Plans as listed in Appendix A of the Local Plan Part 1: Planning Strategy (2020)
 - the [Local Plan Part 1: Core Strategy](#) adopted in October 2009
 - the [Local Plan Part 2: Sites and Development Management](#) adopted in April 2014
 - Policy DW-E12: Protection of Landscape Features - saved from the [Local Plan First Review](#) (2005).
- the [Hampshire Minerals and Waste Local Plan](#) adopted by the Hampshire Minerals and Waste authorities in October 2013
- 'Made' (Adopted by a supportive local referendum, after review by an independent examiner) [Neighbourhood Development Plans](#) - as at February 2024 [Hythe & Dibden](#) and [New Milton](#) Town or Parish Council areas.

1.4. As at February 2024 Neighbourhood Plans are being prepared by [Totton & Eling](#), [Lyminster and Pennington](#), and [Ringwood](#) Town Councils. If 'made' these Neighbourhood Plans would also become part of the Local Development Plan. [Fordingbridge](#) is designated as Neighbourhood Area for the purposes of preparing a Neighbourhood Plan but as yet no plans have been drafted or published.

2. Context for the Local Development Scheme (LDS) update

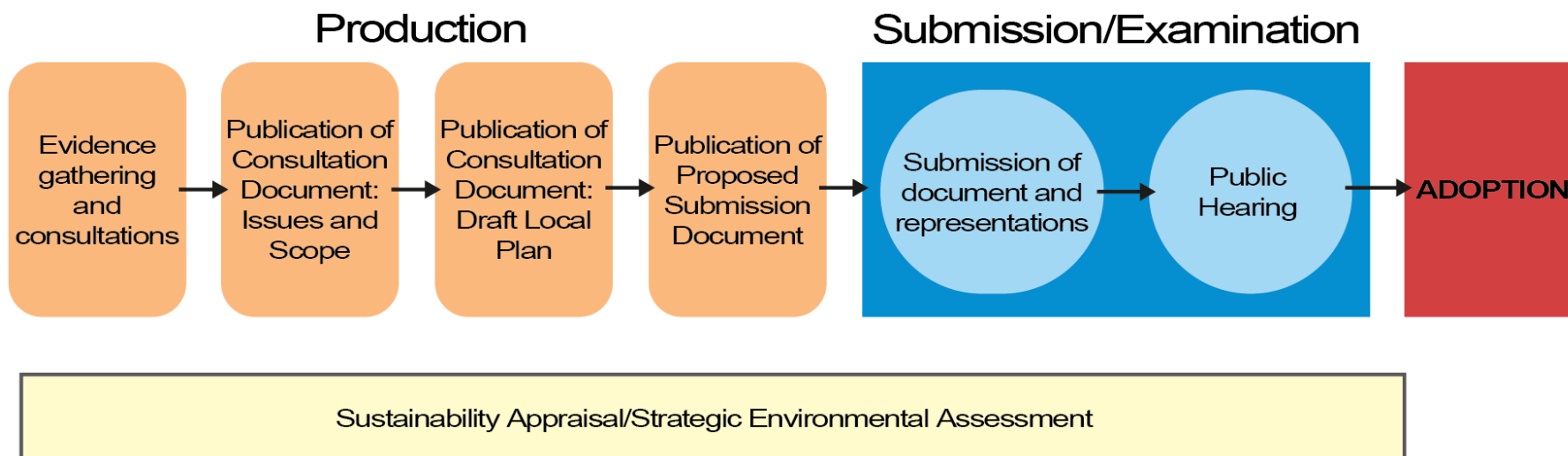
2.1. [The Local Plan 2016-2036 Part 1](#) was adopted in July 2020. It was prepared in a period of national planning policy transition, notably in respect of calculating housing need and the setting of housing targets. The Plan was found sound (subject to agreed modifications) with no requirement for early review in the light of the new planning guidance in place at the time of Local Plan examination.

2.2. Shortly after the adoption of the Local Plan 2016-2036 Part 1 in 2020 the government consulted on wide-ranging changes to the planning system and the plan-making process. The Council paused work on the Local Plan Part 2 until it became clearer whether further work on it would be overtaken by events.

2.3. The Levelling Up and Regeneration Act (2023) makes revisions to the plan-making process, requiring local plans to be focussed on locally distinctive matters (including identifying land for development and other needs), and that they should be contained in a single document. Subsequent changes to the National Planning Policy Framework (NPPF) were published in December 2023. Further planned changes to the planning system are expected, including introducing national development management policies for the first time.

3. Local Plan review approach and programme

3.1. [Regulations](#) set out the main requirements for preparing a local plan. The general process followed is shown in the illustration below, this may evolve as further planning reforms details are introduced.



3.2. The next Local Plan review will comprise a single document, replacing the Local Plan 2016-2036 Part 1 and all policies 'saved' from earlier Local Plans.

3.3. There can be more than one public consultation before the Local Plan review is published in final 'submission' form (when it is open for further public consultation to inform the examination process). Prior to the final submission stage of public consultation, the Council intends to hold an early consultation in summer 2024 on the issues the Local Plan review should cover and its scope. This will be followed by consultation on a full draft of the Local Plan review in Summer/Autumn 2025.

3.4. A timetable and programme for financial years 2024/25 and 2025/26 is provided at Annex 1, covering the period up to publication of a full draft Local Plan review for public consultation. A programme for the additional stages through to examination and adoption will be agreed and published at a later date, once the full details and scope of planning system reforms are available. Any minor timetable adjustments prior to this update will be published on the 'Local Development Scheme' section of our [development plan page](#).

3.5. For areas where a Neighbourhood Plan is being actively prepared and positive progress is being made, the scope and content of the Local Plan review will be considered in the light of community-led planning objectives. The aim will be to ensure the timely progression of a sufficient and consistent planning framework for the plan area as a whole, whilst avoiding unnecessary duplication.

4. Documents supporting the Local Plan

4.1. A full evidence base will be prepared to support the exploration and testing of key issues and feasible policy options for the Local Plan review.

4.2. A range of existing Supplementary Planning Documents (SPD) and other supplementary guidance supports the adopted Local Plan 2016-2036, although these are expected to cease to apply from 2027 under the provisions of the Levelling Up and Regeneration Act (2023). Further details on supplementary guidance can be found on our [Planning Policy guidance page](#).

4.3. The Levelling Up and Regeneration Act (2023) requires that a Design Code (or Codes) be prepared to cover the full local plan area. This work would replace, in whole or part, existing SPD or supplementary guidance documents that provide guidance on local design and character. A plan area-wide Design Code will be prepared alongside the Local Plan review. Further Design Codes for specific communities, sites or types of development will be considered.

Annex 1: Initial programme for 2024/25 and 2025/26 and for the preparation of the Local Plan review

New Forest District (outside the National Park) Local Plan Review programme

Local Plan Review		2024				2025				
		Winter	Spring	Summer	Autumn	Winter	Spring	Summer	Autumn	Winter
Initial evidence base scoping and commissioning										
Preparation of an Issues and Scope public consultation document										
Public consultation on the Local Plan Issues and Scope ('Regulation 18') (including a 'call for sites')										
Consultation review, evidence base development, option testing, Local Plan drafting										
Public Consultation on a full Draft Local Plan ('Regulation 18')										
Consultation review, further testing and refinement										
Public Consultation on Published Plan (regulation 19)										
Examination period ¹	Submit published local plan for independent examination (regulation 22)									
	Examination hearing									
	In-examination Modifications and consultation, if recommended by the Inspector									
	Inspector's report									
Adoption		<p>To be published at a later date once planning reforms in progress are finalised.</p>								

1. The timing and duration of the examination period is at the discretion of the Planning Inspectorate. Modifications of some form may be required. These may affect the final Local Plan adoption date.